

CLEMENTINE DE FORTON &

MARINA OECHSNER DE CONINCK PRESENT

# UTOPIAN DRAMA

EXHIBITION  
CATALOGUE

NATHALIE AUZEPY  
PHILIPPE CALANDRE  
BENJAMIN DEROCHE  
MYRIAM DE LAFFOREST  
ARMELLE KERGALL  
HÉLÈNE LE CHATELIER  
NICOLAS LEFEUVRE  
YAN LEI  
LENA NIKCEVIC  
HONG WAI

**May 2-16 2025**

JW PROJECTS GALLERY - 01-01 3 Kim Yam Road - 23 93 21 Singapore

# UTOPIAN DRAMA

NATHALIE AUZEPY | PHILIPPE CALANDRE | MYRIAM DE LAFFOREST  
BENJAMIN DEROCHE | ARMELLE KERGALL | HELENE LE CHATELIER  
NICOLAS LEFEUVRE | YAN LEI | LENA NIKCEVIC | HONG WAI

**Artists today are increasingly connecting with the environment and embracing eco-humanist values through their artistic practices.**

*UTOPIAN DRAMA is an immersive contemporary art exhibition that explores our evolving relationship with nature in a world of rapid urban transformation.*

Held in Singapore, a garden city known for its futuristic skyline, multicultural identity, and deep focus on harmony and balance—this exhibition finds the perfect setting to question how we reconnect with the natural world.

Through photography, sculpture, painting, and installation, Utopian Drama brings together European and Asian contemporary artists whose works reflect a shared ecological consciousness and a poetic vision of the future.

The exhibition invites the viewer to move between reality and imagination, modernity and memory, stillness and transformation.

In a city where nature and innovation coexist, this artistic journey resonates deeply, offering a space to reflect on what an eco-humanist future might look like—one that places the environment, emotion, and connection at the heart of progress. Art is a motor for transformation.

.In Singapore, New York, Paris, Tokyo how do you imagine your environment and living space through the eye of the artists?

Clémentine de Forton & Marina Oechsner de Coninck

Co-curators of the exhibition

In collaboration with French Embassy of Singapore, as part of Voilah! Festival.







## NATHALIE AUZÉPY

### CITY OF LEAF, A MONUMENTAL ART INVITING TO A POETIC STROLLING



**The leaf is subjected to the whims of nature and orients itself based on the wind.**

Paris, Tokyo, Brussels, New York... The leaf of NATHALIE AUZÉPY is a versatile work and has been commissioned by museums and corporations to create an emblem of the cities in connection with nature.

By involving external parameters to complete the artwork, Nathalie Auzépy seeks a piece that functions as a whole, interactive and integrated into its environment. **Her sculptures offer a sensory experience inviting viewers to a poetic stroll.**

Through her City Leaves sculptures, Nathalie Auzépy reinterprets the urban journey by shifting scale, taking us on a voyage through cities dear to her heart—Singapore, New York, and Paris. These emblematic sculptures, playing with light and transparency, reflect the surrounding environment and urban landscape, transforming familiar spaces into poetic reveries.

Her work invites us to see the city as a work of art, evoking personal journeys, both lived and imagined. **Expanding her concept into Land Art and monumental scale, she will present the extraordinary journey of her City Leaves,** commissioned in three public places in Brussels.

**She is a multidisciplinary artist, particularly dedicated to monumental sculpture.**

As a multimedia artist and creative studio director, Nathalie has completed over 500 commissions for brands such as Chanel, Guerlain, Dior, Hermès, Jaeger-LeCoultre and Accor Group. For both her monumental works and her "infinitesimal" projects, Nathalie Auzépy has also exhibited at major institutions such as the Musée Carnavalet and the French Ministry of Culture. Her practice is imbued with an **eco-humanist philosophical vision in which each element of life integrates harmoniously into the living.**

Her works have been exhibited in several museums, foundations, contemporary art centers and biennales, and have been acquired by private collectors and public institutions in Paris, Brussels, Beijing, Melbourne and the United States.

Graduated in staging design from the Camondo Design School, she opened her first design studio in 1999.

She has also completed major commissions for Beaubourg and presented her projects in New York and Milan, where she received several awards. Living between Paris and Brussels she also devotes her time to artistic creation, which takes shape in photography, drawing, sculpture, installation and performance.

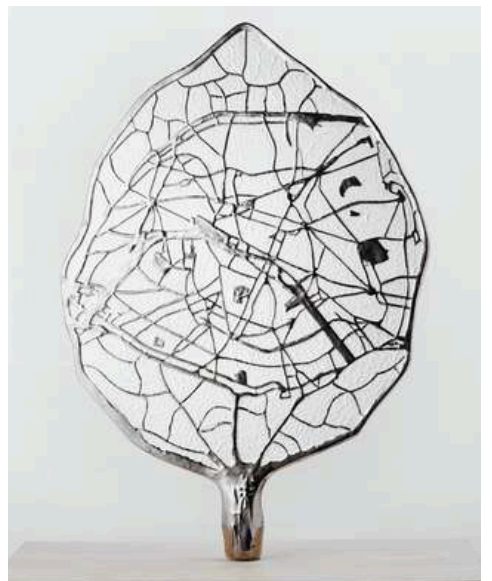


City Leaf NEW YORK  
H 104 x 75 cm with oak wood frame



City Leaf Paris  
H 104 x 75 cm with oak wood frame





City Leaf Paris  
PORCELAIN GOLD, SILVER & WHITE  
H50 x 35 x 15 cm Standing sculpture



# NATHALIE AUZEPY MONUMENTAL SCULPTURES (ART COMMISSION PROJECT)



BRUSSELS CITY LEAF 220 x L165 D96cm



PARIS CITY LEAF 220 x L165 D96cm



SINGAPOUR CITY LEAF H220 x L165 x D96cm

"City Leaf "  
Self stand Large Model  
Polished mirror stainless Steel-  
Back and shadow Matte black epoxy  
H220 x L165 x D96cm







## PHILIPPE CALANDRE

### From Architecture to Imagination: a poetic metamorphosis



French Photographer, Philippe Calandre's research is centered on iconic deconstruction and the question of the power that the photographic image holds over our contemporary societies. With photomontages, he introduces imagination to architecture, blurring the lines between vision and perception.

His constructions, through their spatial organization, echo the poetry of this contemporary metamorphosis.

In this series, Philippe Calandre reinterprets Singapore's iconic buildings—a series commissioned by the Alliance Française before the pandemic and unveiled for the first time here—by deconstructing their forms through photography. Among the featured buildings are *The Concourse*, designed by *Paul Rudolph*, and *The Duo Twin Towers*, designed by *Ole Scheeren*.

His minimalist, raw, and powerful photographs reveal the **architectural heritage of the city-state**, capturing the balance between **modernity and experimentation**. Through his lens, the city of the future is no longer just about infrastructure and technology; it becomes a living organism shaped by social life, connectivity, and governance. His works strip urbanity of its artificial layers, offering a **dystopian yet deeply aesthetic vision of ever-evolving metropolises**.

*Photographs of Philippe Calandre are part of several **art collections**:*

- *Fonds National d'Art Contemporain (National Foundation for Contemporary Art), Fr.*
- *Wilmotte Foundation*
- *La Cornue S.A, Several companies*
- *Anne Barrault's Private Collection*
- *Private Collections*

#### **Artist's Residencies**

- *2018 – PHOTO BRUSSELS FESTIVAL- le Hangar- carte blanche- Brussels- Belgium*
- *2007 – KIO-A-THAU – Kaoshiung – Taiwan*
- *2006 – TAIPEI ART VILLAGE RESIDENCY – Taipei – Taiwan*
- *2006 – KIO-A-THAU – Kaoshiung – Taiwan*





## SUNTEC CITY SERIES

Fine Art Photography  
Dyptique,

Left:  
The Concourse by  
Paul Rudolph  
Foundation  
90 x 60 cm  
Edition 1/5

Right:  
The Duo Twin Towers  
by Ole Scheeren  
40 x 60 cm  
Edition 1/5







# BENJAMIN DEROCHE

## A land art photographer connecting environment, meaning and emotion



His work goes **beyond simple photography: it is an exploration of the world, particularly of nature**, to reveal its poetic and mystical dimension and to open our eyes to change.

**"Art does not reproduce the visible; it makes visible." - Paul Klee**

The artist acts as a revealer of the hidden, a central notion in the philosophy of art: **What is beauty? What is the relationship between nature and art?** Is the artist an autonomous creator, a spiritual intermediary, or a skilled craftsman? Where does the tangible begin and where does the mystery end?

**Benjamin unveils the richness of visible and invisible worlds**, creating "natural sculptures" in the style of Land Art that are simple and contemplative, to re-narrate the environment beyond what is visible. Iridescent light, natural undulations, delicate floral arrangements, deposited seeds: every detail becomes a subtle dialogue with nature and the universal.

The works of Benjamin are **energy, connection, movement, and suspended moments**.

A Doctor of Visual Semiotics, photographer and author, LEICA ambassador, Benjamin Deroche is widely recognized on the contemporary art scene for his unique transdisciplinary approach that combines writing and photography to create narrative works, inspired by figures like Marguerite Duras, Rabindranath Tagore, and Alexandra David-Néel.

*The works of Benjamin Deroche are represented worldwide in prestigious collections, both private and institutional.*

*He exhibits regularly in museums, galleries, and leading international art fairs such as FIAC, Paris Photo, and Photo London.*

*Benjamin Deroche also serves as an artist-witness for Mécène Suravenir, a foundation committed to supporting local communities and a more responsible, inclusive, and sustainable world.*

*Watch the film by [Benjamin Deroche produced by Suravenir](#)*





BENJAMIN DEROCHE  
SURNATURE SERIES

Fine Art Photography,  
framed

Above:  
100 x 75 cm  
Edition 1/6

Left:  
50 x 70 cm  
Edition 2/6



MYRIAM  
DE LAFFORT

1911-1991

1911-1991

1911-1991

1911-1991

1911-1991

1911-1991

1911-1991

1911-1991

1911-1991

1911-1991

1911-1991

1911-1991

1911-1991

1911-1991

1911-1991

1911-1991

1911-1991

1911-1991

1911-1991

1911-1991

1911-1991

1911-1991

1911-1991

1911-1991

1911-1991

1911-1991

1911-1991

1911-1991

1911-1991

1911-1991

1911-1991

1911-1991

1911-1991

1911-1991

1911-1991

1911-1991

1911-1991

1911-1991

1911-1991

1911-1991

1911-1991

1911-1991

1911-1991

1911-1991

1911-1991

1911-1991

1911-1991

1911-1991

1911-1991

1911-1991

1911-1991

1911-1991

1911-1991

1911-1991

1911-1991

1911-1991

1911-1991

1911-1991

1911-1991

1911-1991

1911-1991

1911-1991

1911-1991

1911-1991

1911-1991

1911-1991

1911-1991

1911-1991



## MYRIAM DE LAFFOREST

### Bridging the tangible and the dreamlike



Myriam de Lafforest's sculptures **embody the power of an impulse where strength is married to delicacy through an impulsive movement** that transcends the mind. The titles of her works, such as "IMPULSE", "FUSION," "ELAN," and "INTUITION," encourage us to reflect on the subtlety of our being and our quest for something higher, deeper, and more authentic.

The dance of bodies represents an ascending movement towards the sacred, a dimension particularly significant for Myriam, an inspired and inspiring artist who gently guides us toward something beyond. The spirit descends into matter—into the very earth the artist sculpts—before rising again through her hands to elevate us

For the first time exhibited in Singapore, Myriam de Lafforest's bronze sculptures play a key role in the immersive and theatrical narrative of UTOPIAN DRAMA.

**Her unique bronze sculptures—both intense and delicate—interact with light and transparency.** They resonate naturally with the idea of a world suspended between reality and utopia. The human form and its gracious movement seem to materialize from a mysterious elsewhere, bridging the tangible and the dreamlike.

In this visual theater, her sculptures link human emotion to a vision of poetic, sensory urbanism. Reminiscent of Wim Wenders' cinematic universes, they provide a luminous counterpoint to urban dystopias.

Her sculptures create suspended moments of contemplation, as if floating in time, in a world constantly in motion.

*Raised in a family of artists, Myriam understood early on the vital role art would play in her life. While living in Spain, she met Salvador Mañosa, a renowned Catalan sculptor who, over several years, passed on his sculpting technique to her—his sole student.*

*She has been exhibiting in Europe and Asia since 2005, in galleries and international art fairs. Her works are collected around the world.*

*In 2025, she was awarded the Singulart Prize for Best Limited Edition with 'Angelus'.*

*In 2024, she was a finalist for the AGBAR Contemporary Art Prize of Catalonia with 'Intuition'.*



**MYRIAM DE LAFFOREST ÉLAN,**

55 x 40 x 20 cm ,

Bronze,

Edition 8 + 4 E.A.





**INTUITION,**  
60 x 60 x 25 cm ,  
Bronze,  
Edition 8 + 4 E.A.



**FUSION,**  
80 x 80 x 25 cm ,  
Bronze,  
Edition 8 + 4 E.A.

More available artworks **BY CATALOGUE ONLY: Bronze sculptures**



**INSTANT D'ÉTERNITÉ,**  
90 x 90 x 40 cm ,  
Bronze, Edition 8 + 4 E.A.



**ASCENSION**  
90 x 90 x 40 cm  
Bronze, Edition 8 + 4 E.A.

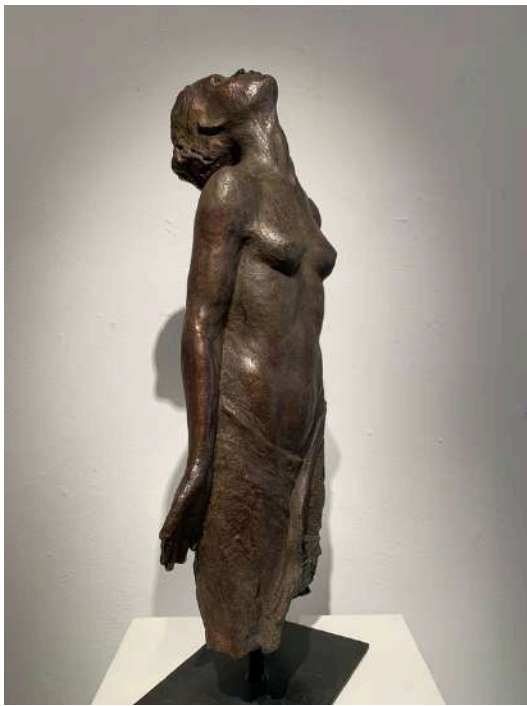


**CES ÂMES (THESE SOULS) ,**  
50 x 50 x 20 cm ,  
Bronze ,  
Edition 8 + 4 E.A.



**ESPRIT**  
50 x 50 x 20 cm,  
Edition 8 + 4 E.A





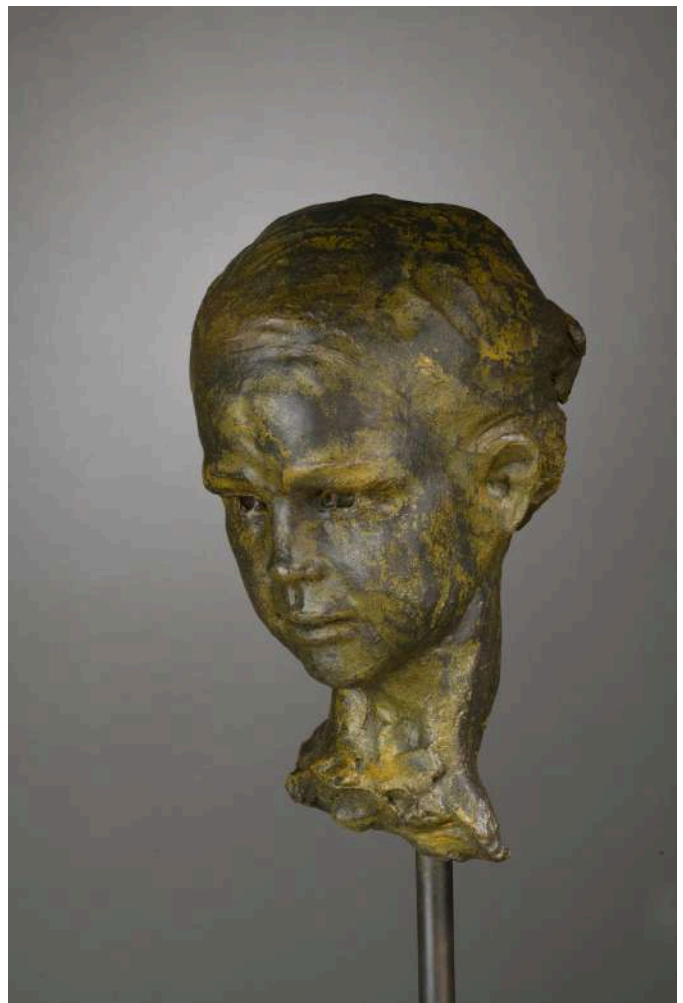
**CONVERSION**  
60 x 30 x 15cm  
Edition 8 + 4 E.A.



**PRESENCIA,**  
60 x 30 x 20 cm  
Edition 8 + 4 E.A.

**ENFANT INTERIEUR**  
45 x 45 x 20 cm  
Edition 8 + 4 E.A.

ENFANT INTERIEUR MONUMENTAL  
100 x 50 x 60 cm  
Edition 8 + 4 E.A.





Amelle Kaya



## ARMELLE KERGALL

### Natsukashii : Folding Time, Weaving Memories



« Natsukashii » is inspired by the **Japanese word meaning nostalgic or reminiscent of good memories.**

In this series, the artist pairs photographs of her ancestors with her own holiday snaps. By interweaving images that evoke precious memories of the past, she creates poetic volumetric visuals that suggest the family heritage that we all have within us. Much like Proust's madeleine, these works invite us to dive back into our own memories

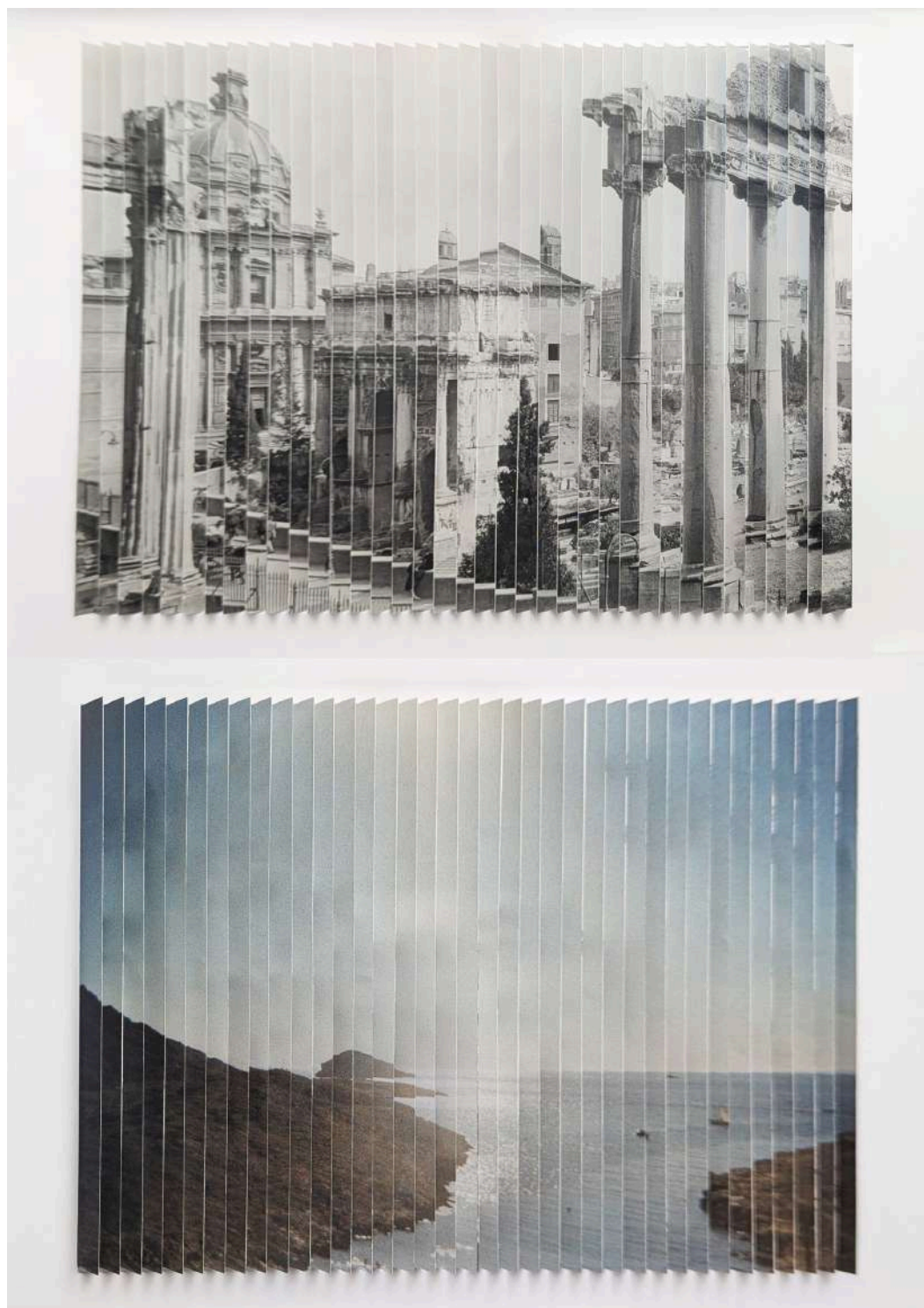
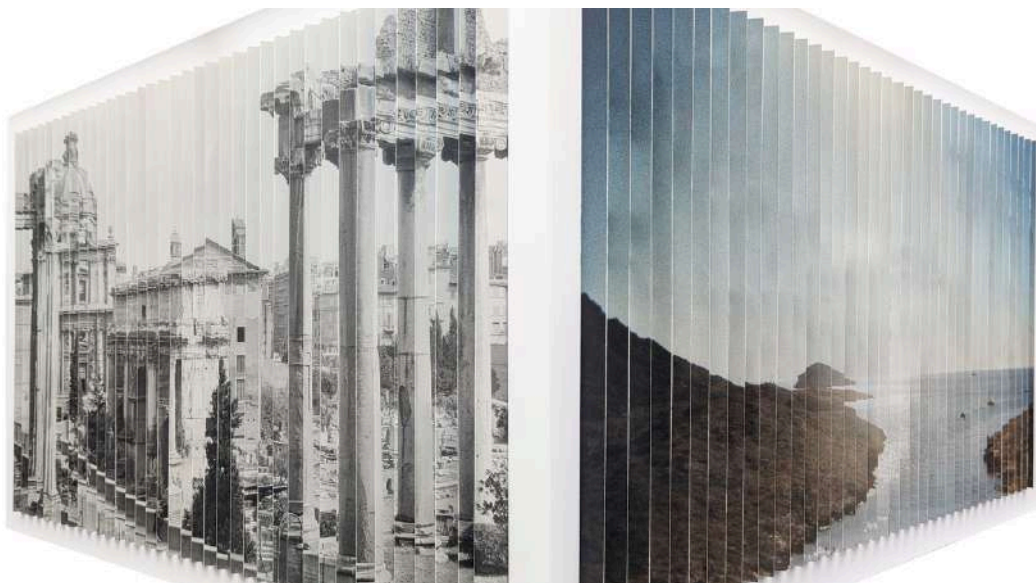
Armelle Kergall is a French visual artist whose work explores identity, atavism and memory through photography.

In 2005 she began a photographic project documenting her very large family. Some discoveries unsettled her deeply and led her to question: What do we carry with us, consciously or unconsciously? What do we inherit? This investigation led her to delve into family archives, which, combined with her own images, became her main creative tool.

Since then, her projects have taken various forms - installations, repurposed objects, texts and three-dimensional images. She directly intervenes on her prints using diverse manual techniques—scratching, crumpling, collage, weaving, lenticular—creating layered compositions where past and present intertwine, and where intimate and collective memory meet. **Her work questions the transmission of memory and the role of images in shaping identity.**

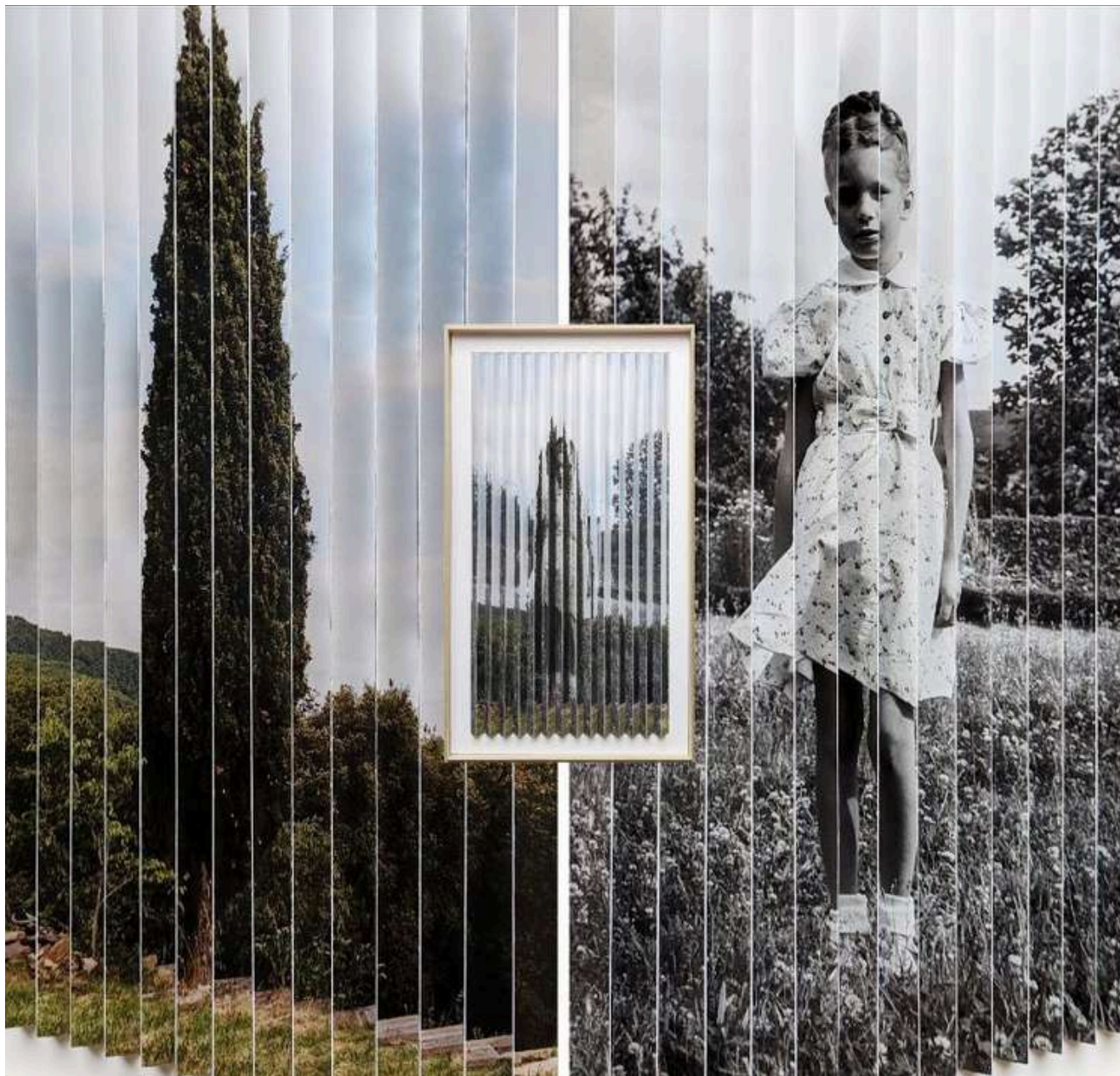
*Her work has been exhibited at numerous galleries and festivals across Asia. In 2019, she won the KG+SELECT Public Grand Prize at Kyotographie for her exhibition « Anatomy of a French Family/Investigation in Progress ».*

*Her recent work continues this exploration, visually translating the links between past and present, and deepening her reflection on heritage and the memories that shape us.*



ARMELLE KERGALL  
NATSUKASHII  
ROME-MARSEILLE  
85 x 62 cm Duo  
Edition 3



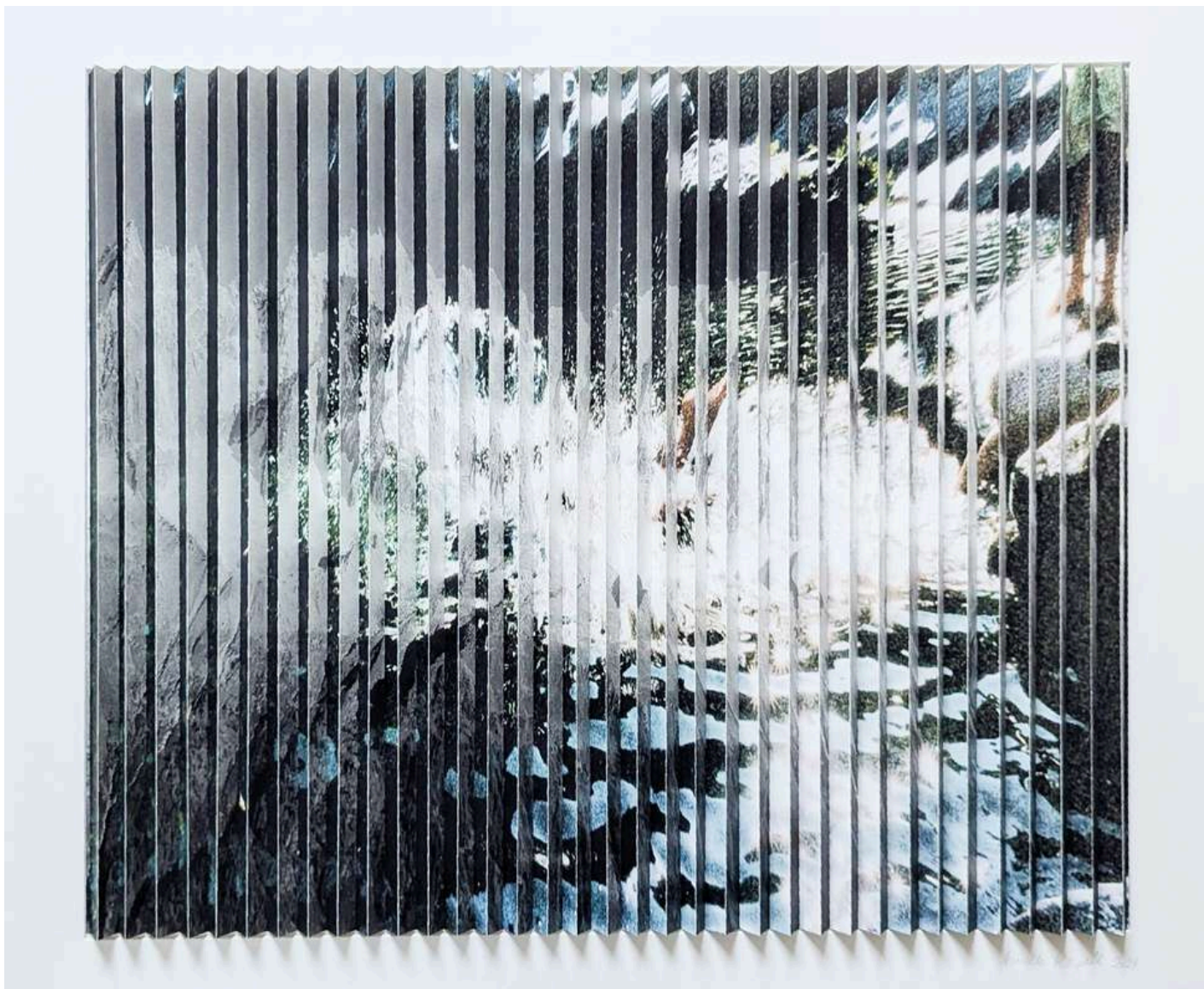


ARMELLE KERGALL  
NATSUKASHII  
STANDING GIRL  
62 x 35 cm  
Edition 3



ARMELLE KERGALL  
NATSUKASHII  
KIYOTSU  
62 x 62 cm  
Edition 3





ARMELLE KERGALL  
NATSUKASHII, SPLASH P  
85 x 62 cm  
Edition 3







# HÉLÈNE LE CHATELIER

## What will be left from us?



"What Will Be Left from Us?" is a community art project that explores our deep interconnection with nature and the impact of human activity on the environment. Despite our love for nature, modern industrialization has made us passive witnesses to its decline, forgetting the fragile interdependence that once defined us.

The series presents portraits of children and teenagers in Singapore, their faces layered with natural elements collected from the environment. These elements, painted before being photographed, resemble neuronal structures, symbolizing the delicate networks that shape both ecosystems and human identity. The project raises a fundamental question: **As we alter the natural world, how do we reshape ourselves?**

Highlighting the role of younger generations, the work calls for collective responsibility in securing a sustainable future. It has been exhibited at Bus.Art.Stop for Singapore Art Week 2021 and in Tokyo, emphasizing the universal need for environmental awareness and action.

*Hélène Le Chatelier studied Fine Art in Paris at l'Ecole Nationale Supérieure des Arts Appliqués et des Métiers d'Art, Olivier de Serres, where she graduated in Fine Art Fresco painting with honours. She also holds a Master Degree in Aesthetics and Art Philosophy, with distinction, from Université Paul Valéry (France).*

*Since her very first exhibition in Paris in 1997, Hélène has embraced various modes of expression: painting, sculpture, photography, video, installation and writing.*

*Best known for her ink bodyscapes and her works with paper engaging writing and abstract landscapes, **Hélène studies the influence of memory and social context on our intimate space.** She currently lives and works in Singapore. Her work has been exhibited in Singapore, Bangkok, Tokyo, Paris, Brussels, Bordeaux, Seattle and New York.*

### **Exhibitions in Asia & Europe**

2025 What doesn't kill you – Group show at Art Outreach gallery – Gillman Barracks Singapore

2024 Serial and Massively Parallel – Curated by John Tung– Our Cloud Forest, SEA FOCUS 2024,

2024 Bois Dormant Group show – L'imperatrice Gallery - Brussels curated by Marina Oechsner

2023 Missing Part, The Sound of Silence with Calvin Pang - Art Outreach, Singapore

2023 Itinerant Practices – curated by Peruke Projects – Cromwell Place, Gallery 10, -London

2021 Intimate Topographies - curated by Tan Siuli - Alliance Française Singapore

2021 Geology of Memory - Hearth Programme, Art Outreach, Gillman Barracks, Singapore

2019 Unspoken Truths - Ronewa Art Projects, Alliance Française in Bangkok, Thailand

2017 Beyond the Surface - Intersections Gallery, Singapore

2015 Naked Memories, Intimacy – White Space Gallery, Bangkok, curated by Marie Pierre Mol

**HELENE LE CHATELIER - WHAT WILL BE LEFT FROM US (2025)**  
**Giclee Print , Wood Mount, 38 x 38 cm, edition 3**



Castille



Kiara



Ezraa



Theo

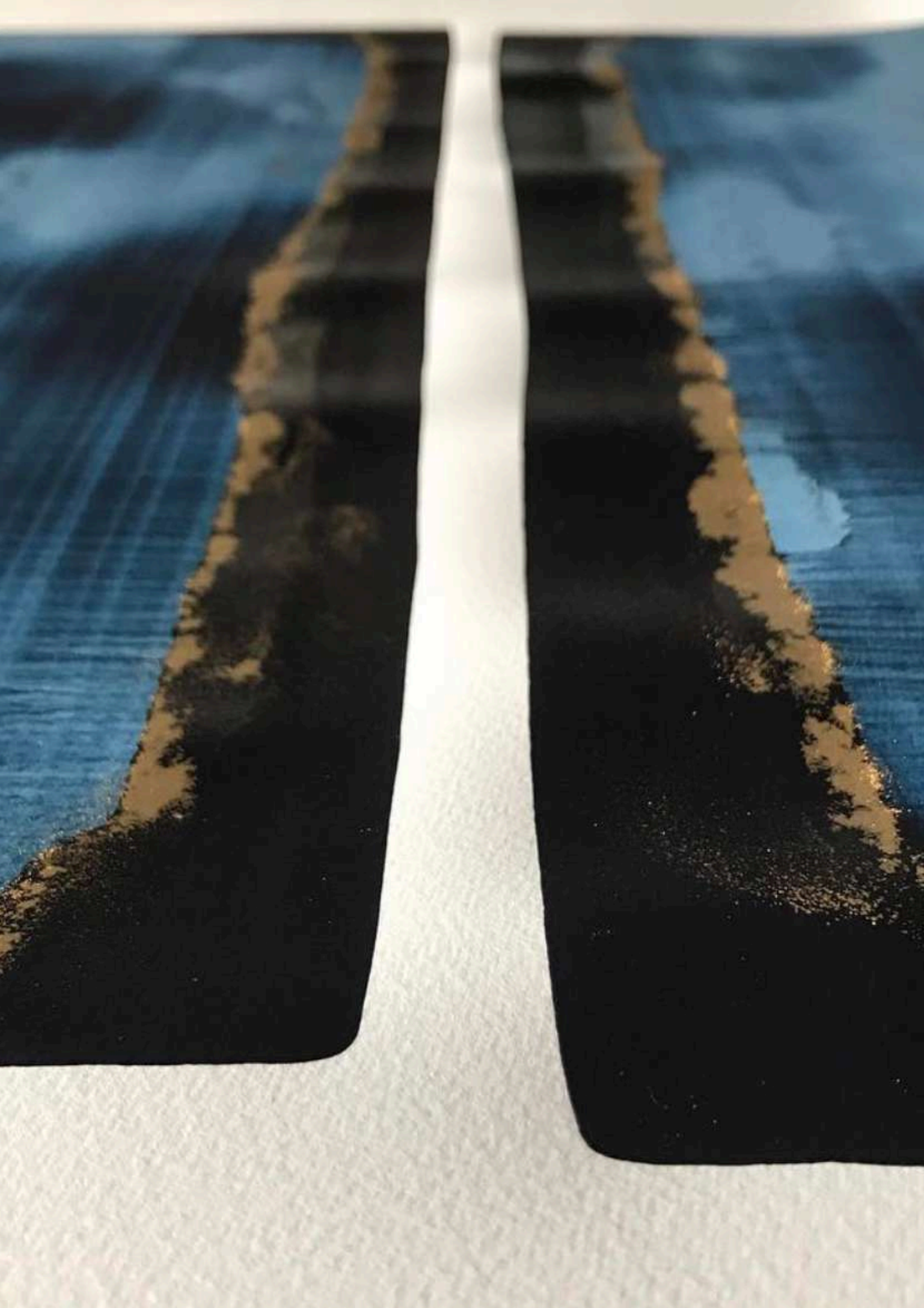


Joy



Almaric





## NICOLAS LEFEUVRE

### **SOMEWHERE BETWEEN NOW & BEFORE (SBNB) – A visual journey through memory**



Nicolas Lefeuivre was born in France in 1975.

After studying architecture and design at the renowned Camondo School in Paris, Lefeuivre travelled for almost a year throughout Asia. In 2001, he opened a design studio in Singapore, providing design and art direction for some of the world's leading luxury brands. In 2008, he became creative director of Chanel Asia and Japan. He is now fully dedicated to his art.

The new series **SOMEWHERE BETWEEN NOW & BEFORE** explores the fluid and evolving nature of memory, blending psychology, neuroscience, and art. Through synesthesia, fashion, and craftsmanship, the project creates an intricate artistic narrative that captures how recollections shift over time.

Revisiting twenty years of travel journals in late 2023, he discovered **how memories had transformed—blurred, altered, and intertwined, creating hybrid capsules of sound, color, and light.** His work explores this tension between clarity and obscurity, using blur, fragmentation, and layered pigments to depict the fluid nature of recollection. Through a deeply tactile process, he assembles and repurposes materials like old piano keys, worn Japanese shoes, and natural indigo, merging elements of Arte Povera and Action Painting to preserve fleeting moments in tangible form.

SBNB is ultimately about preservation—transforming intangible memories into tangible, multisensory artifacts. Through synesthetic connections and handcrafted gestures, it invites viewers into **a poetic dance between presence and absence, gain and loss, remembrance and reinvention.**

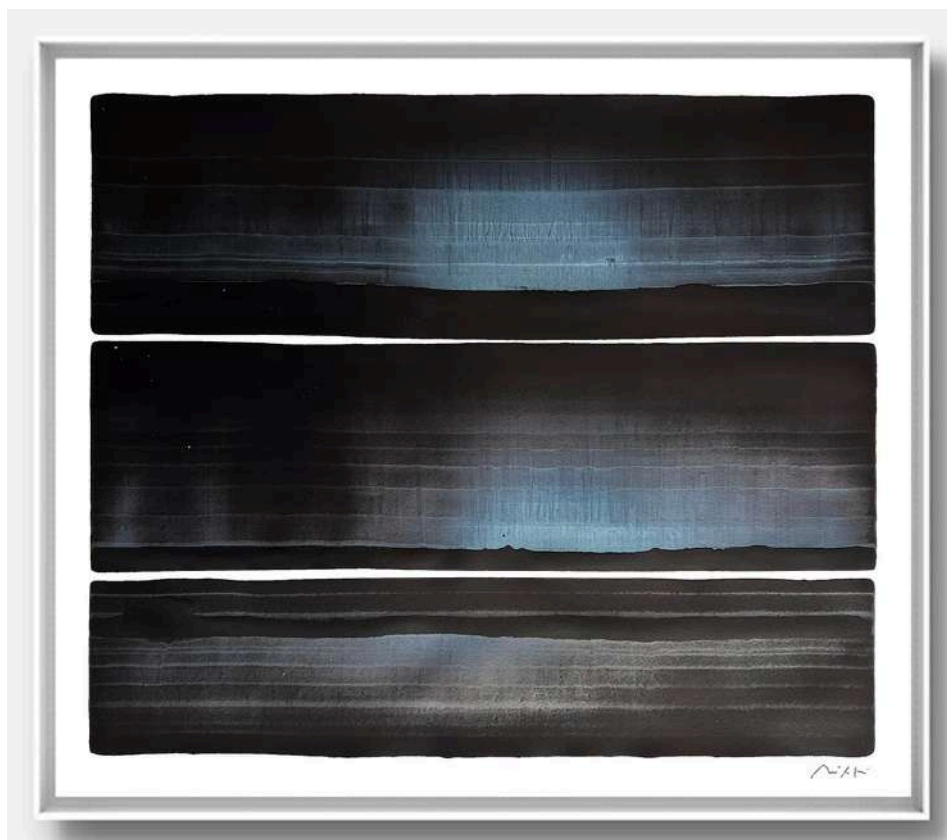
Nicolas Lefeuivre brings this utopian experience to a powerful and poetic conclusion. A **strong spiritual symbol, the kimono** represents the delicate balance between **humanity and its environment**, an essential condition for a sustainable world.

*His works are part of several art collections around the world and have been shown at **prestigious art fairs**, including BRAFA, Biennale Paris – Grand Palais, PAD Design & Art, Art Taipei, and Art Paris.*

**Artistic collaborations** with : Juliette Armanet, Merci Paris, Pommery, Diptyque, Shu Uemura etc.



Pigments, ink on paper



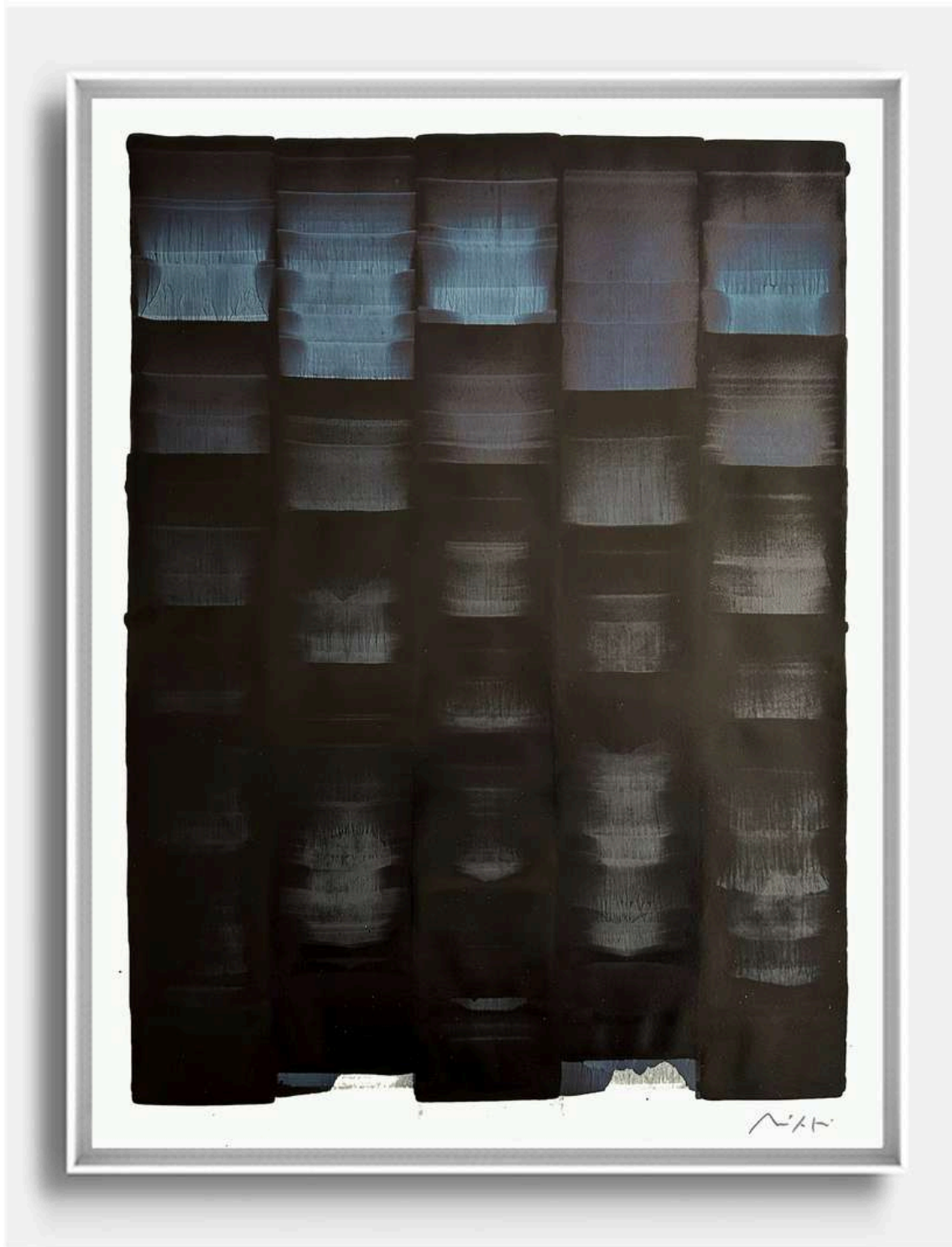
**NICOLAS LEFEUVRE**  
**SBNAB 40, 2025**  
68 x 55 cm



**NICOLAS LEFEUVRE**  
**SBNAB 38, 2025**  
75 x 55 cm



**NICOLAS LEFEUVRE**  
**SBNAB 39, 2025**  
75 x 55 cm



**NICOLAS LEFEUVRE SBNAB 41, 2025**

75 x 55 cm



Pigments, ink (and metallic gold powder) on denim



**NICOLAS LEFEUVRE SBNAB 31, 2024**  
120 x 85 cm



**NICOLAS LEFEUVRE SBNAB 37, 2024**  
130 x 95 cm



**NICOLAS LEFEUVRE**

**SBNB 27, 2024**

140 x 100 cm

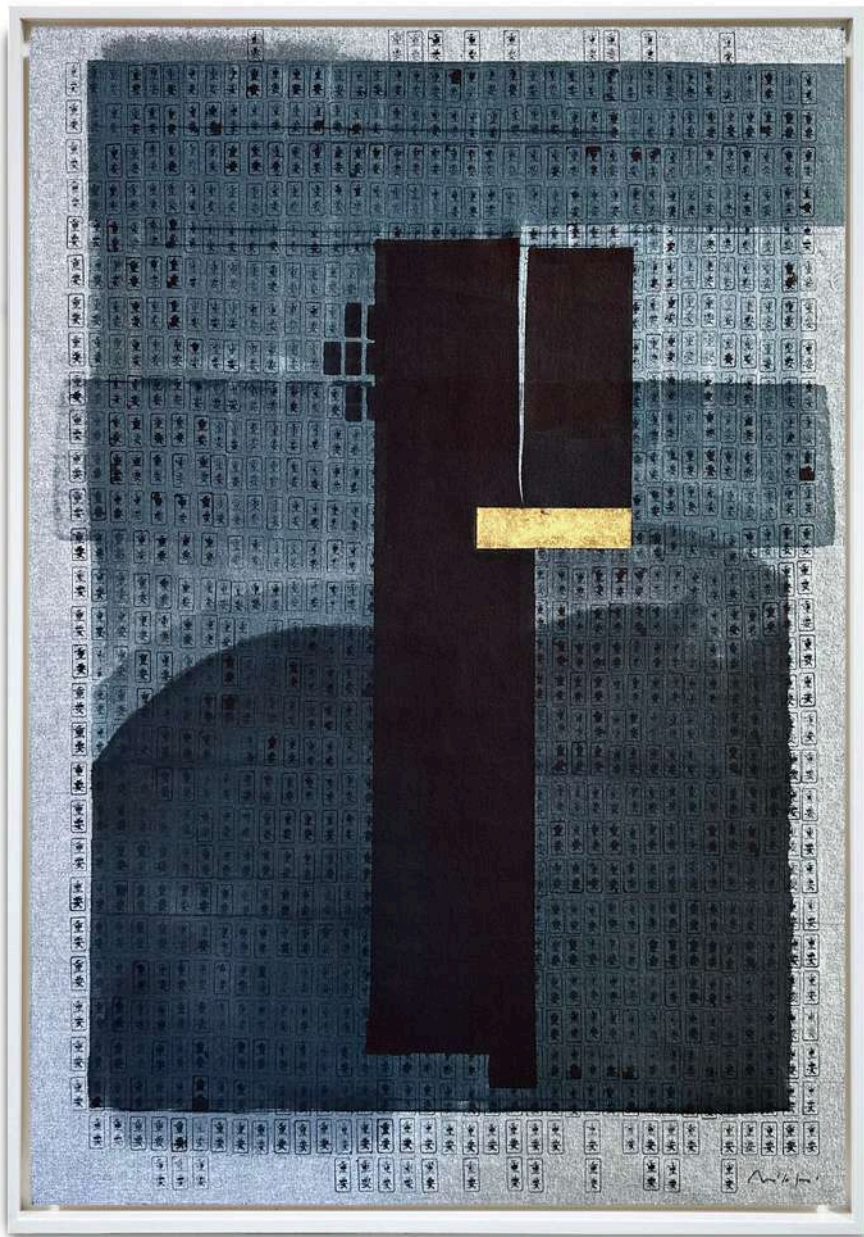




**NICOLAS LEFEUVRE**  
**SBNAB 42, 2025**  
 50 x 30 cm



**NICOLAS LEFEUVRE**  
**SBNAB 43, 2025**  
 65 x 60 cm



**NICOLAS LEFEUVRE**

**SBNAB 28, 2025**

100 x 70 cm





YAN LEI

更+  
OLAL'ART  
当代



Yan Lei is **a singular and unconventional figure in contemporary Chinese art**, known for his dystopian astronaut sculptures that express a whimsical vision of the **child-hero confronted with a disorienting world**. We extend our sincere gratitude to Olal Art Gallery for generously lending Yan Lei's sculptures for UTOPIAN DRAMA in Singapore.

Yan Lei, born in 1965 in Langfang, Hebei Province, China, is a contemporary artist recognized for his conceptual approach that critiques the structures and dynamics of the art world. He graduated from the Zhejiang Academy of Fine Arts (now China Academy of Art) in Hangzhou in 1991 and currently resides and works in Beijing and Hong Kong.

Yan Lei's diverse body of work spans painting, video, photography, installation, and performance. His art often examines themes such as power relationships, competition, and the valuation within the art system. Notably, he employs untrained painters to execute his works, challenging traditional notions of authorship and artistic creation.

*Throughout his career, Yan Lei has participated in numerous international exhibitions, including the Venice Biennale (2003), Documenta in Kassel (2007, 2012), and the Guangzhou Triennial (2005). His works are held in prominent collections such as the M+ Sigg Collection in Hong Kong, the Centre Pompidou in Paris, and the Long Museum in Shanghai.*





YAN LEI Sea of Void 2017  
Bronze, edition 8,  
84 x 125 x 40 cm



YAN LEI - NEVER APPART 2018  
Bronze, edition 8,  
90 x 25 x 17 cm



YAN LEI - INDEPENDENCE 2017  
Bronze, edition 8,  
69 x 18 x 21 cm







## LENA NIKCEVIC

### A Poetic Search for Existence in a Changing World



French-Montenegrin artist Lena Nikcevic is primarily a painter, illustrator, and visual artist, widely recognized for her double-sided engraved acrylic paintings, **“In Search of Happiness.”**

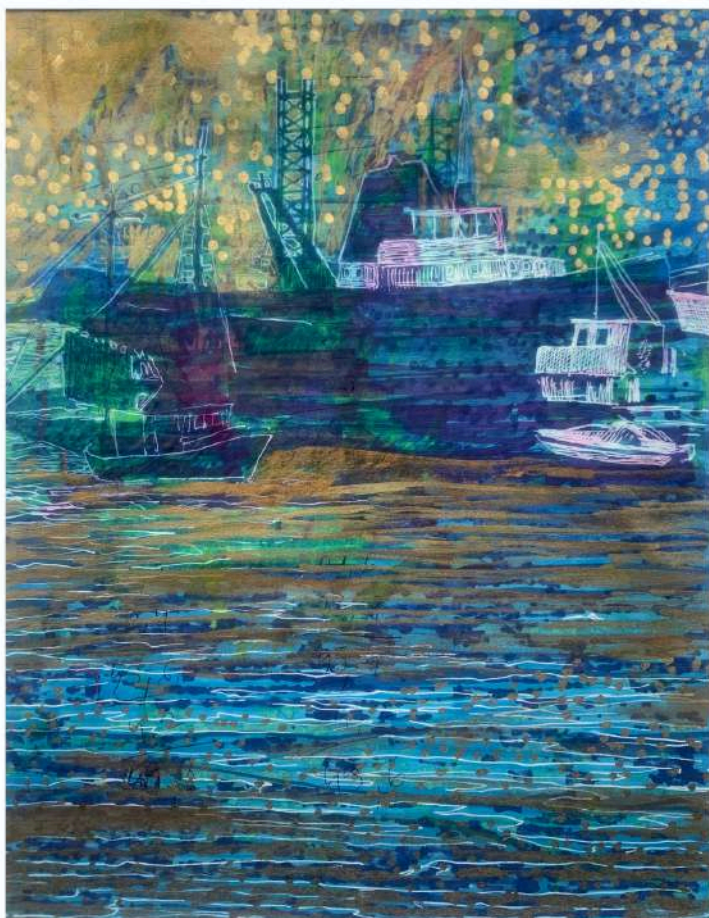
Her artistic vision transforms the relationship between humans and their environment into poetic and sensitive pictorial spaces, posing fundamental questions about **our existential presence in a world of perpetual change.**

As co-founder of L'Atelier de la Morinerie in France, she has been commissioned for community-based projects in Munich, France, Brussels and Montenegro. UTOPIAN DRAMA exhibition marks her first showcase in Singapore, presenting In Search of Happiness, a series deeply rooted in her travel journals and her trips to remote regions of India and Southern Europe.

Through intricate engravings and layered compositions, Nikcevic's work invites viewers into a space of reflection, contemplation, and a poetic search for meaning in an ever-evolving world.

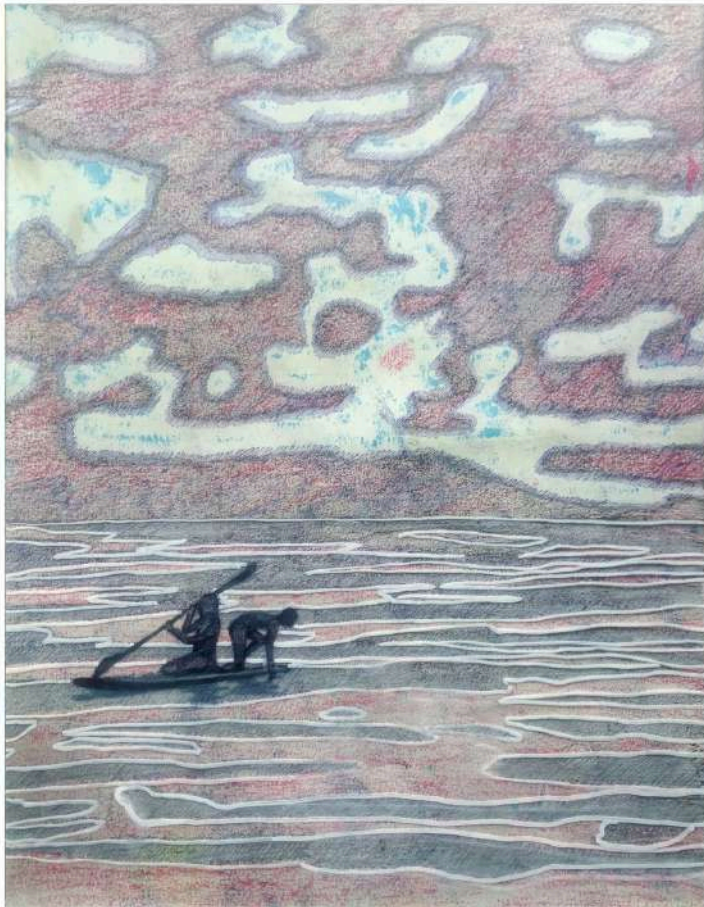






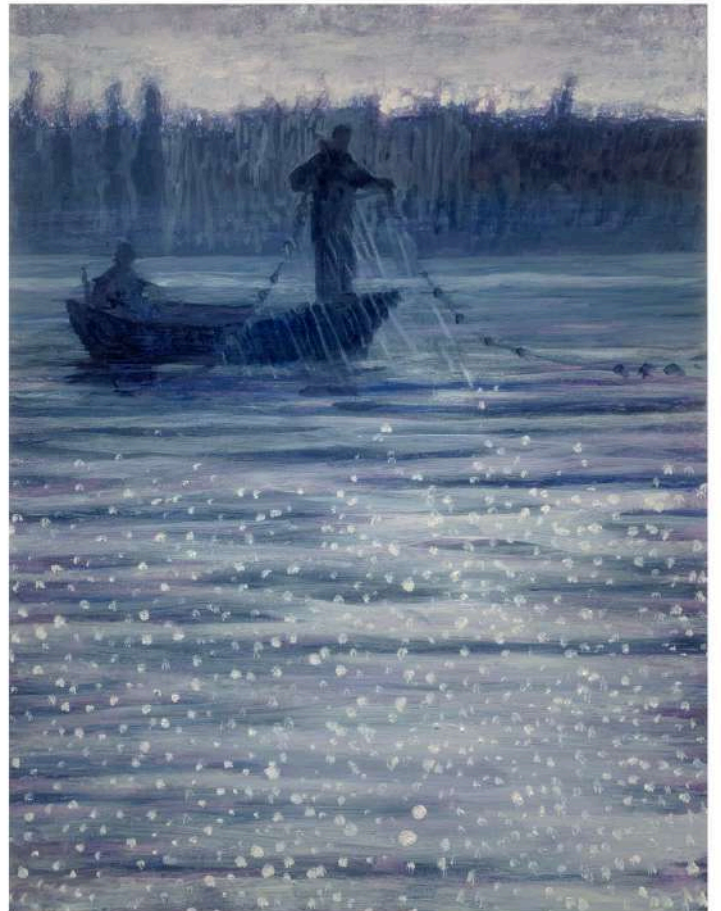
Lena Nikcevic  
Doubled Sided 18-19  
Mixed media  
35 x 27 cm  
ed. 8





Lena Nikcevic  
Doubled Sided 23-24  
Mixed media  
35 x 27 cm  
ed.8





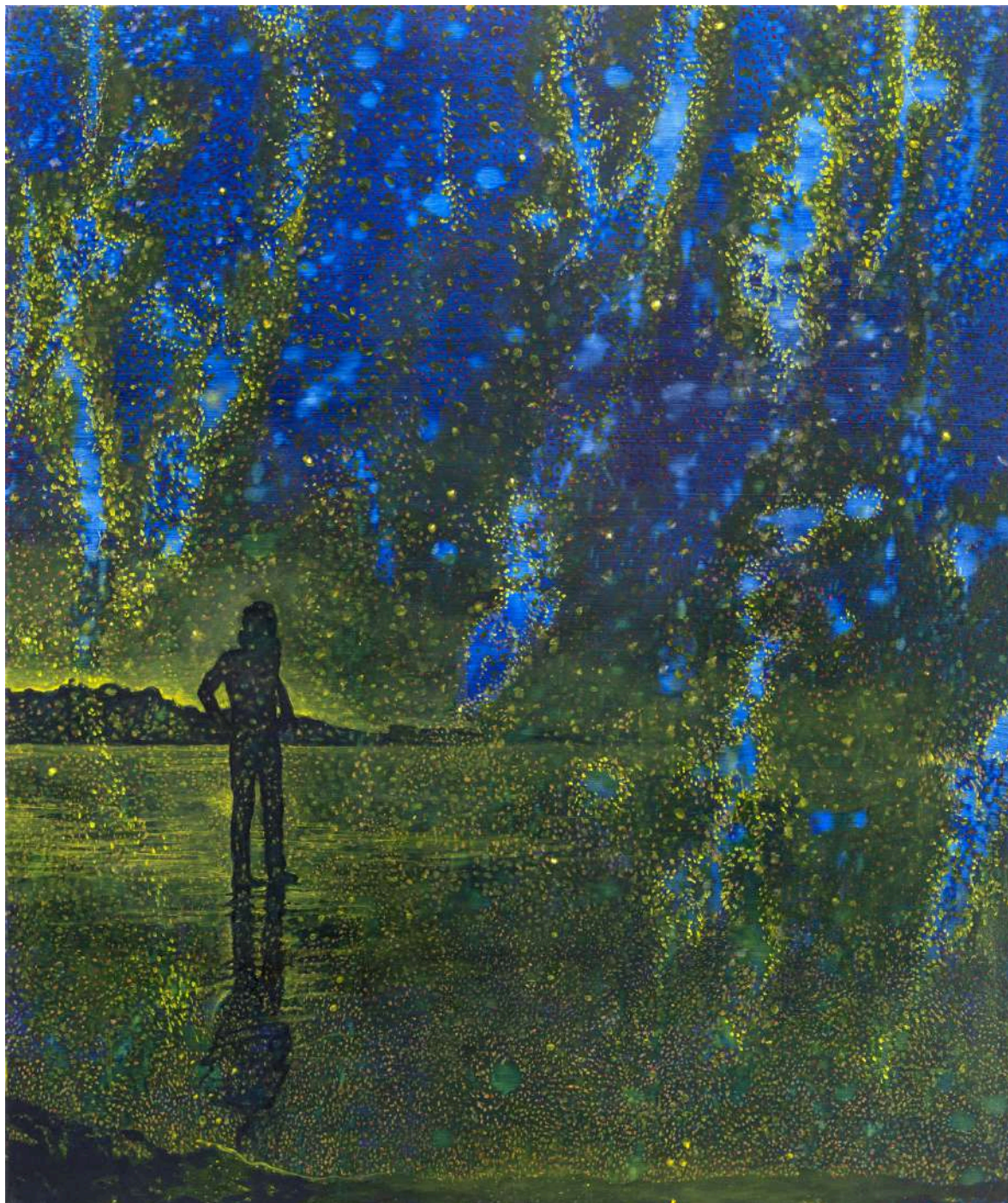
Lena Nikcevic  
Double Sided 23-25  
Mixed media  
35 x 27 cm  
ed.8





Lena Nikcevic  
In Search of Happiness 21  
Oil on canvas  
120 x 100 cm





Lena Nikcevic  
In Search of Happiness 18  
Oil on canvas  
120 x 100 cm







## HONG WAI

### From Architecture to Imagination: a poetic metamorphosis



Hong Wai is a well-known Chinese artist based in France.

She began practicing Chinese ink painting at the age of 14 and held her first solo exhibition at the Macao UNESCO Centre.

Upon relocating to Paris, she embarked on a journey to redefine Chinese ink art by incorporating delicate lace details into her works, thereby embodying her cross-cultural identity as a Chinese woman in Paris.

She is recognized for her **contemporary interpretation of Chinese ink art**, especially in the traditionally male-dominated Chinese ink painting tradition. Her bold brushstrokes challenge conventional perceptions of the art form.

Her femininity and the precision of her brush in painting lace captivated **Aubade**, for whom she created a capsule collection of lingerie.

Hong Wai's captivating **landscapes**, created in Chinese ink, immediately draw viewers into a journey of discovery where sensual bodies, clothed in delicate lace, emerge from her majestic mountain scenes. The lacework, painted with meticulous precision, humanizes and enlivens nature, creating a fascinating and poetic dialogue. This interplay of strength and delicacy, grandeur and finesse, anchoring and fluidity offers a breathtaking visual analogy—**an exquisite balance between the ephemeral and the eternal**.

Hong Wai is a graduate of the Department of Chinese Literature at the National Taiwan University, and holds a **Master's degree in Theories and Practices of Art and Language from the École des Hautes Etudes en Sciences Sociales in Paris**.

After her first solo **exhibition** at the age of 17, the artist exhibited at Sotheby's Gallery in Hong Kong, the Museum of the Orient in Lisbon, the Macao Museum of Art, and some of the world's largest international art fairs, such as Art Stage Singapore and Art Taipei. She has also participated in exhibitions in Paris, Zurich, New York, Miami, and Montreal.



HONG WAI  
LANDSCAPES SERIES

Ink and color on silver  
Xuan paper

Top:  
105 x 95 cm  
unique piece

Left:  
33 x 33 cm / 50 x 50 cm  
Unique Piece





## CLEMENTINE DE FORTON GALLERY

Clémentine de Forton is gallerist and art curator. Between Europe and Asia, she has been organizing exhibitions and assisting in the creation of collections since 2009. She also represents artists for artistic collaborations.

Art collector herself, the creation of the gallery is the story of encounters with the artists through the different times of her life. She was deeply moved by their work and felt inspired to share their artistic and spiritual messages with a wider audience.

All chosen artists share a common purpose – to push the boundaries of artistic expression.

“A true art collection should be more than elegant, beautiful and aesthetic; it should also inspire, guide, and jolt you in unexpected ways. It should reflect your moods, your state of mind in ways that are healing as well as thought-provoking. The right pieces can both shock and reveal hidden aspects of the psyche towards greater self-awareness”.



## MARINA DESIGN WORKS

Marina Design Works is an art and design consultancy founded by Marina Oechsner de Coninck in 2018 in Singapore.

Marina now works between Singapore and Europe as an interior architect and art curator. After graduating from the renowned École Boulle in Paris in 2001, she moved to Hong Kong, where she worked as an architectural designer for international organisations such as L'Oréal, LVMH and Revlon.

Her extensive career in luxury and beauty sector has enriched her experience of bridging collaborations between international artists and luxury houses. Later she founded her studio in Singapore with the aim to foster artistic collaborations between artists, brands and institutions.

From Influencers with Alliance Française to Fossils Dance she has produced ten exhibitions exhibiting international artists in Heritage places in Singapore and Brussels.

By incorporating art that speak to your heart, you can create an interior that not only looks stunning but also tells a story that is authentically yours and has the potential to connect with the community where you live.





Clémentine and Marina share the same passion for building collections of contemporary art. They regularly collaborate on the creation of itinerant exhibition concepts aimed at promoting artists in Asia and Europe.



FOR ALL INFORMATIONS REGARDING THE ARTWORKS:



clementine@clementinedefortongallery.com  
+34 622 499 918  
[www.clementinedefortongallery.com](http://www.clementinedefortongallery.com)  
[@clementinedefortongallery](https://www.instagram.com/clementinedefortongallery)

marina.calinaud@gmail.com  
+32 0492521760  
[www.marinadesignworks.com](http://www.marinadesignworks.com)  
[@marinaoechsner](https://www.instagram.com/marinaoechsner)

This exhibition is in partnership with



as part of 2025



with the collaboration of

